

05.

MATERIAL HANDLING

125

05.1 LOADER HOSES



126

05.2 HOT AIR HOSES



127

05.3 HOSE CLAMPS



132

05.4 CAMLOCK COUPLINGS ALUMINUM



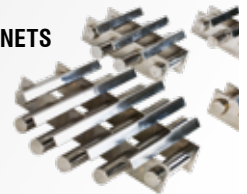
132

05.4 VACUUM COUPLERS



135

05.5 HOPPER MAGNETS



135

05.6 MATERIAL SCOOPS



136

05.7 BALANCES AND MOISTURE ANALYSER



ANTI-STATIC PU HOSE/PVC HELIX



Part No.	Ø ID (mm)	Min Wall thickness (mm)	Roll Length (m)	Wire Clip Ref
PUP38	38	0,5	10	3030250
PUP40	40	0,5	10	3030250
PUP45	45	0,5	10	3030269
PUP50	50	0,5	10	3030285
PUP60	60	0,5	10	3030306

Description

Anti-Static Polyurethane hose reinforced with rigid PVC spiral helix and copper wire
 Inside surface perfectly smooth, outside corrugated
 Excellent flexibility
 Light abrasion resistance
 Operating temperature -20°C to +80°C
 10m Coil

PU HOSE/STEEL HELIX



Part No.	Ø ID (mm)	Min Wall thickness (mm)	Roll Length (m)	Wire Clip Ref
PURH32	32	1,5	10	3030242
PURH38	38	1,5	10	3030250
PURH40	40	1,5	10	3030250
PURH45	45	1,5	10	3030269
PURH50	50	1,5	10	3030285
PURH60	60	1,5	10	3030306

Description

Polyurethane hose reinforced with a copper covered steel helix
 Very high resistance to abrasions
 Excellent flexibility
 Smooth Bore
 Operating temperature -40°C to +80°C
 10m Coil

PVC HOSE



Part No.	Ø ID (mm)	Ø OD (mm)	Roll Length	Clamp Ref.
PAPVC19	20	27	30	HDC2325
PAPVC25	25	33	30	HDC3134
PAPVC31	32	40,4	30	HDC3740
PAPVC38	38	47	30	HDC4347
PAPVC50	50	60	30	HDC5963
PAPVC64	64	74,8	30	HDC7379
PAPVC75	76	88,2	30	HDC8591

Description

Clear PVC Hose with a steel spiral helix
 Excellent flexibility
 Inside & Outside smooth
 Operation temperature -10°C to + 60°C
 30 m Coil

HOT AIR HOSES

SILICON DRYER HOSE



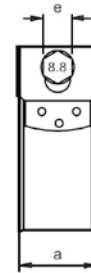
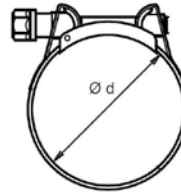
Part No.	Ø ID (mm)	Roll Length (m)	Wire Clip Ref
SIL132	32	4	3030200
SIL138	38	4	3030226
SIL141	41	4	3030234
SIL151	51	4	3030269
SIL160	60	4	3030285
SIL170	70	4	3030306

Description

Coated glass fabric - Single Ply
 Operating Temperature -60°C to +250°C
 4 Metre Length

HOSE CLAMPS HEAVY DUTY

STAINLESS
STEEL



Part No.	Ø	e	a		Hose ref.
HDC2325	23-25	8	18	50	PAPVC19
HDC3134	31-34	11	20	50	PAPVC25
HDC3740	37-40	11	20	50	PAPVC31
HDC4347	43-47	11	20	50	PAPVC38
HDC5963	59-63	11	20	25	PAPVC50
HDC7379	73-79	13	25	25	PAPVC64
HDC8591	85-91	13	25	25	PAPVC75

Description
Material: Stainless Steel

WIRE CLIP WITH SCREW - IDEAL FOR LOADER HOSES WITH OUTER HELIX



Part No.	Size range mm
3030200	33-37
3030218	35,5-40
3030226	38,5-43
3030234	41-46
3030242	43,5-49
3030250	46,5-53
3030269	50,5-56
3030277	53,5-60
3030285	56,5-64
3030293	60-68
3030306	64-72

Description
 Wire: Steel wire B-UNI 3823
 Screw: 6.6 grade steel Cr3 zinc-plated
 This clip was specially designed for use with hoses incorporating an outer helix. It is generally used when installing ventilation ducting. The double-wire construction of this clip means that it sits comfortably on either side of the helix and can then be clamped down firmly thanks to the screw-tightening system.

CAMLOCK COUPLINGS ALUMINIUM

Camlock Couplings Aluminium

A range of Camlock couplings made according to A-A-59326, DIN 2828

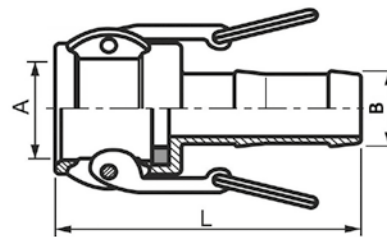
Camlock is a safe coupling for use with hoses and pipes for many different media such as dry goods, polymer granules, cooling water, chemicals etc. The coupling connects easily by opening the wings, inserting the male part and then closing the wings by hand.

Body material :Aluminium A356 or A104

handle material: Brass

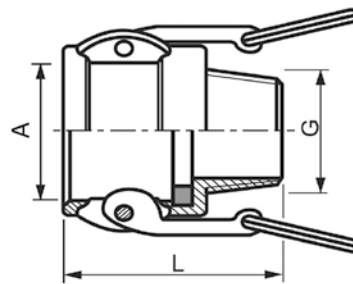
Sealing: NBR.

HOSE TAIL LEVER COUPLING TYPE C



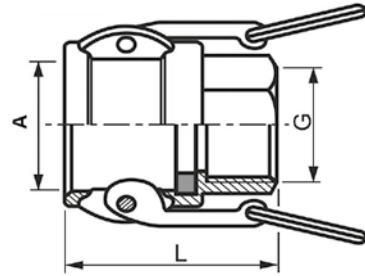
Part No.	Size	B	A	L	Max pressure
MPC-HC19	75	3/4" 19 mm.	32,4	91	17 bar
MPC-HC25	100	1" 25 mm.	37,2	105	17 bar
MPC-HC32	125	1.1/4" 32 mm.	46	112	17 bar
MPC-HC38	150	1.1/2" 38 mm.	53,9	118	17 bar
MPC-HC50	200	2" 50 mm.	63,7	135	17 Bar
MPC-HC64	250	2.1/2" 64 mm.	76,4	147	10 bar
MPC-HC75	300	3" 75 mm.	92,1	162	8 bar

MALE THREADED LEVER COUPLING TYPE B



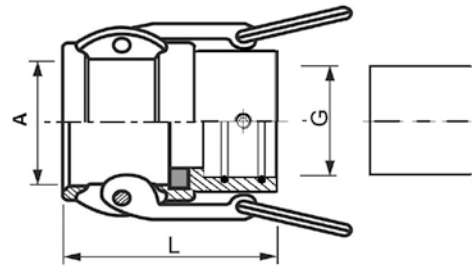
Part No.	Size	G	A	L	Max pressure
MPC-MC3/4	75	3/4"	32,4	47	17 bar
MPC-MC1	100	1"	37,2	56	17 bar
MPC-MC1-1/4	125	1.1/4"	46	64	17 bar
MPC-MC1-1/2	150	1.1/2"	53,9	66	17 bar
MPC-MC2	200	2"	63,7	76	17 Bar
MPC-MC2-1/2	250	2.1/2"	76,4	83	10 bar
MPC-MC3	300	3"	92,1	87	8 bar

FEMALE THREADED LEVER COUPLING TYPE D



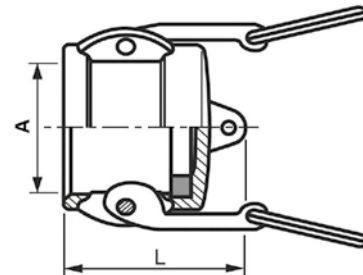
Part No.	Size	B	A	L	Max pressure
MPC-FC3/4	75	3/4"	32,4	47	17 bar
MPC-FC1	100	1"	37,2	56	17 bar
MPC-FC1-1/4	125	1.1/4"	46	64	17 bar
MPC-FC1-1/2	150	1.1/2"	53,9	67	17 bar
MPC-FC2	200	2"	63,7	76	17 Bar
MPC-FC2-1/2	250	2.1/2"	76,4	83	10 bar
MPC-FC3	300	3"	92,1	87	8 bar

PIPE CONNECTION LEVER COUPLING TYPE D



Part No.	Size	G	A	L	Max pressure
MPC-PC40	150	40	53,9	67	17 bar
MPC-FC45	200	45	63,7	76	17 Bar
MPC-FC50	200	50	63,7	76	17 Bar
MPC-FC60	250	60	76,4	83	10 bar

DUST CAP LEVER COUPLING TYPE DC



Part No.	Size	A	L	Max pressure
MPC-DC3/4	75	32,4	32	17 bar
MPC-DC1	100	37,2	40	17 bar
MPC-DC1-1/4	125	46	46	17 bar
MPC-DC1-1/2	150	53,9	48	17 bar
MPC-DC2	200	63,7	55	17 Bar
MPC-DC2-1/2	250	76,4	57	10 bar
MPC-DC3	300	92,1	59	8 bar

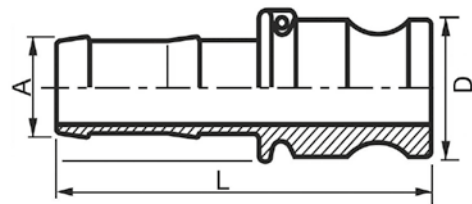
CAMLOCK COUPLINGS ALUMINIUM

GASKETS FOR CAMLOCK COUPLERS



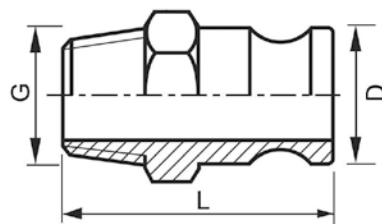
Part No. NBR	Part No. Viton	Size	Dimension (mm)
G3/4 NBR	G3/4 FKM	3/4"	35 x 22 x 5.5
G1NBR	G1FKM	1"	40 x 27 x 6.4
G1-1/4NBR	G1-1/4FKM	1-1/4"	50 x 35 x 6.4
G1-1/2NBR	G1-1/2FKM	1-1/2"	56 x 41 x 6.4
G2NBR	G2FKM	2"	67 x 51 x 6.4
G2-1/2NBR	G2-1/2FKM	2-1/2"	80 x 64 x 6.4
G3NBR	G3FKM	3"	95 x 76 x 6.4

HOSETAIL PLUG TYPE E



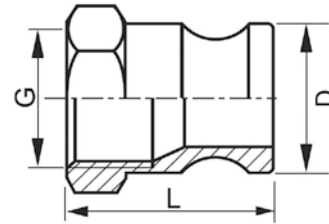
Part No.	Size	A	D	L	Max pressure
MPC-HP3/4	75	3/4" 19 mm.	32,1	86	17 bar
MPC-HP1	100	1" 25 mm.	36,7	103	17 bar
MPC-HP1-1/4	125	1.1/4" 32 mm.	45,5	107	17 bar
MPC-HP1-1/2	150	1.1/2" 38 mm.	53,4	114	17 bar
MPC-HP2	200	2" 50 mm.	63,1	131	17 Bar
MPC-HP2-1/2	250	2.1/2" 64 mm.	75,8	142	10 bar
MPC-HP3	300	3" 75 mm.	91,5	168	8 bar

MALE THREADED PLUG TYPE F



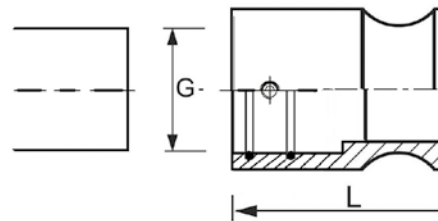
Part No.	Size	G	D	L	Max pressure
MPC-MP3/4	75	3/4"	32,1	55	17 bar
MPC-MP1	100	1"	36,7	67	17 bar
MPC-MP1-1/4	125	1.1/4"	45,5	74	17 bar
MPC-MP1-1/2	150	1.1/2"	53,4	76	17 bar
MPC-MP2	200	2"	63,1	87	17 Bar
MPC-MP2-1/2	250	2.1/2"	75,8	97	10 bar
MPC-MP3	300	3"	91,5	100	8 bar

FEMALE THREADED PLUG TYPE A



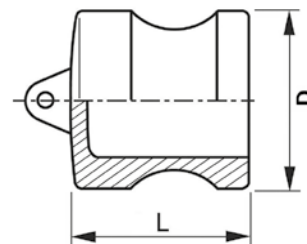
Part No.	Size	G	D	L	Max pressure
FPC-FP3/4	75	3/4"	32,1	40	17 bar
FPC-FP1	100	1"	36,7	48	17 bar
FPC-FP1-1/4	125	1.1/4"	45,5	54	17 bar
FPC-FP1-1/2	150	1.1/2"	53,4	56	17 bar
FPC-FP2	200	2"	63,1	63	17 Bar
FPC-FP2-1/2	250	2.1/2"	75,8	68	10 bar
FPC-FP3	300	3"	91,5	69	8 bar

PIPE CONNECTION PLUG TYPE A



Part No.	Size	G	D	L	Max pressure
MPC-PP40	150	40	53,4	76	17 bar
MPC-PP45	200	45	63,1	87	17 Bar
MPC-PP50	200	50	63,1	87	17 Bar
MPC-PP60	250	60	75,8	97	10 bar

DUST PLUG TYPE DP



Part No.	Size	D	L	Max pressure
DPC-DP3/4	75	32,1	28	17 bar
DPC-DP1	100	36,7	35	17 bar
DPC-DP1-1/4	125	45,5	38	17 bar
DPC-DP1-1/2	150	53,4	40	17 bar
DPC-DP2	200	63,1	49	17 Bar
DPC-DP2-1/2	250	75,8	50	10 bar
DPC-DP3	300	91,5	51	8 bar

VACUUM COUPLERS

SUCTION COUPLINGS FOR MATERIAL CONVEYING OF STAINLESS STEEL 1.4305



Description

High quality quick coupling system for conveying of polymer granulates or liquids.

- Stainless Steel (wear resistance)
- Full flow passage
- Connections for pipes, tubes and hoses
- Quick and easy operation

COUPLING FOR HOSE ATTACHMENT

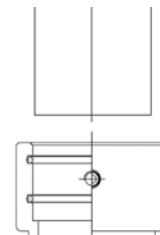
STAINLESS
STEEL




Part No.	Hose Attachment (mm)	Flow Ø	Diameter	Length	
VCH38	38	34	65	82	1
VCH40	40	36	65	82	1
VCH45	45	41	65	82	1
VCH50	50	41	65	82	1

COUPLING FOR PIPE ATTACHMENT

STAINLESS
STEEL



Part No.	Pipe Diameter (mm)	Flow Ø	Diameter	Length	
VCP38	38	34	65	68	1
VCP40	40	36	65	68	1
VCP45	45	41	65	68	1
VCP50	50	41	65	68	1

COUPLING WITH FEMALE THREAD

STAINLESS
STEEL



Part No.	Thread	Flow Ø	Diameter	Length	
VCT1-1/2	1-1/2"	41	65	68	1
VCT2	2"	41	65	68	1

BLIND COUPLING WITH CHAIN

STAINLESS
STEEL




Part No.	Diameter	Length	
VCB	65	82	1

PLUG FOR HOSE ATTACHMENT

STAINLESS
STEEL

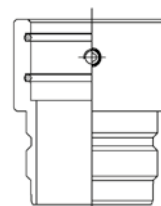



Part No.	Hose Attachment (mm)	Flow Ø	Diameter	Length	
VPH38	38	34	55	83	1
VPH40	40	36	55	83	1
VPH45	45	41	55	83	1
VPH50	50	41	55	83	1

VACUUM COUPLERS

PLUG FOR PIPE ATTACHMENT

STAINLESS
STEEL



Part No.	Pipe Diameter (mm)	Flow Ø	Diameter	Length	
VPP38	38	34	58	68,5	1
VPP40	40	36	58	68,5	1
VPP45	45	41	58	68,5	1
VPP50	50	41	58	68,5	1

PLUG WITH FEMALE THREAD

STAINLESS
STEEL



Part No.	Thread	Flow Ø	Diameter	Length	
VPT1-1/2	1-1/2"	41	59	65	1
VPT2	2"	41	59	65	1

BLIND PLUG WITH CHAIN

STAINLESS
STEEL



Part No.	Flow Ø	Diameter	Length	
VPB	-	58	60	1

HOPPER MAGNETS

STAINLESS
STEEL



Part No.	Type	Strength (Gauss)	Size Diameter (mm)
D100	Standard	2500	100
D100-ES	Extra Strong	10000	100
D150	Standard	2500	150
D150-ES	Extra Strong	10000	150
D200	Standard	2500	200
D200-ES	Extra Strong	10000	200
D250	Standard	2500	250
D300	Standard	2500	300

Description

- Standard: Rare Earth
- Extra Strong: Neodymium
- Separation Magnets
- Stainless Steel encased
- Place direct in the Hopper to separate metal from polymers and avoid damage of nozzle and hotrunners etc.

MATERIAL SCOOP



Part No.	Size
2885	1.9ltr

Description

1.9Ltr Material Scoop
Ideal for scooping granules and tipping into material hoppers

BALANCES AND MOISTURE ANALYSER

COMPACT BALANCE



Part No.	Capacity	Readability	Platform Size
MCB500	500 g	0,1 g	Ø 120 mm
MCB2000	2000 g	0,1 g	Ø 120 mm

Description

Compact balance for weighing parts up to 2000 g

Features:

Backlit LCD display
 Stainless steel pan
 ShockProtect™ overload three-point protection
 Can be stacked for storage
 Lock down mounting slot for Kensington™ type lock and cable
 Dual tare keys
 Lightweight and portable
 Colour coded, sealed keypad

Modern low profile design
 Low cost and simple to use
 External calibration
 Auto sleep / power down function to save battery life
 Auto power off
 Low battery indication
 AC Adaptor

Applications:

Weighing
 Percentage weighing
 Parts counting
 Below balance weighing
 Weight accumulation

PRECISION BALANCE



Part No.	Capacity	Readability	Platform Size
MPB410	410 g	0,001 g	Ø 120 mm

Description

Precision Balance for weighing parts with very accurate tolerance.

Features:

Backlit LCD display
 Colour coded keys
 Level indicator with adjustable levelling feet
 Removable draft shield supplied
 Robust metal housing

Sealed keypad
 External calibration
 Pan lifter to easily remove samples

Applications:

Weighing
 Net / Total
 Check weighing
 Percentage weighing
 Weight accumulation

Parts counting
 Animal / dynamic weighing
 Density determination
 Below balance weighing

DISPOSABLE SAMPLE PANS



Part No.	Deep (mm)	
MMB-P50	10 mm	50

Description

Aluminum sample pans are ideal for moisture analysis testing. The disposable pans fit neatly on the MMB moisture analysers pan holder. They are 10mm deep to keep the items being weighed in place. This pack holds 50 disposable pans.

MOISTURE ANALYSER



Part No.	Capacity	Readability	Platform Size
MMB65	65 g	0,001 g	Ø 100 mm

Description

The MMB Moisture Analyser makes moisture analysis of plastic granules easy for fast and accurate results. The moisture analyzer comprises of a balance and an integrated heater. The analyser will first weigh the material sample in a foil tray at the start of the process; it will then heat the sample up, removing the moisture, and continue heating sample until it stops losing weight. This data is then used to calculate the moisture content based on the moisture loss rate, known as a drying curve.

Features:

- USB port for memory card and USB I/O interface
- RS-232 interface
- Built-in memories for storing products and settings
- 3 settings for heating sample, ramp up, step and standard
- Automatic test start setting for when the lid is closed
- Pan lifter to easily remove samples
- Large backlit display with dual text prompts

CALIBRATION WEIGHTS



Part No.	Weight
CALW20G	20 g
CALW50G	50 g
CALW200G	200 g
CALW1000G	1000 g

Description

Ideal for calibrating Scales and moisture analyser.

THERMAL PRINTER



Part No.	Power Supply	Paper Width
ATP-100	110/230 VAC - 8,5 VDC	57,5

Description

Mouldpro's ATP thermal printer is compact and ideally suited for use with balances and scales. Simple-to-use features combined with quick set-up makes for a truly versatile printer.

Features:

- A single positive push-button feed key and three easy-to-read LED indicators make operation simple.
- Combined with the compact design, which takes little space on the bench, this makes the ATP the right choice for any printing applications.

Spare Paper:

- No. ATP-100-1 Thermal paper
- No. ATP-100-10 Thermal paper (10pk)